

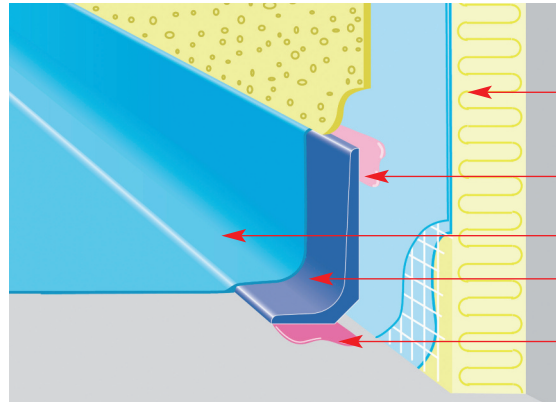
# KORTE® Concave mouldings & Sikafloor® floor coating systems\*



The ideal combination for perfect floor coating

## ■ KORTE® concave moulding Types H30/30 to H150/40

→ Example:  
For external thermal  
insulation composite system



External thermal insulation  
composite system

Priming: Sika-Primer 3N  
Adhesive: Sikaflex-11 FC

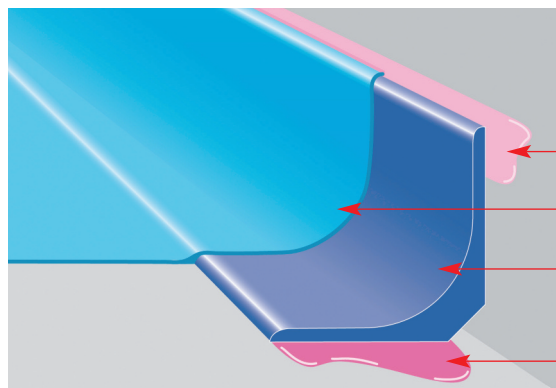
Sikafloor® floor coating systems\*

**KORTE®** concave moulding (H50/25)

Sikafloor®-156 + floating agent T  
or Sikadur®-31 CF

## ■ KORTE® concave moulding Types H30/30 to H150/40

→ 'Fillets' for all standard  
applications



Priming: Sika-Primer 3N  
Adhesive: Sikaflex-11 FC

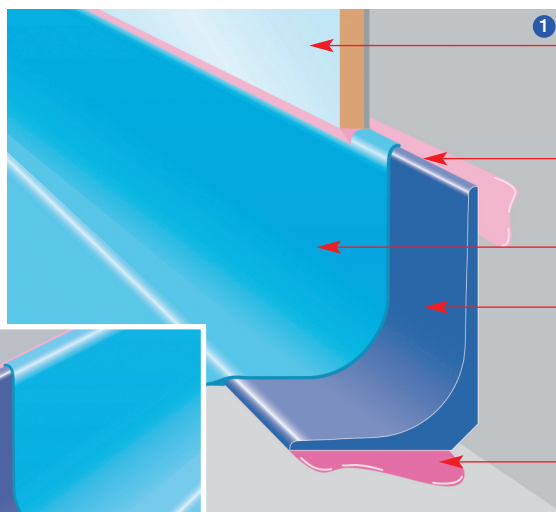
Sikafloor® floor coating systems\*

**KORTE®** concave moulding (H50/50)

Sikafloor®-156 + floating agent T  
or Sikadur®-31 CF

## ■ KORTE® concave moulding Types H30/30 to H150/40

→ Example:  
① Tiled wall  
② Dry construction wall with  
adjustment screws



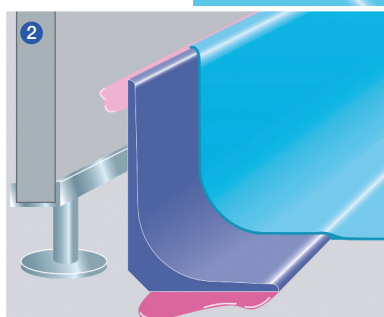
① Tiles or wall cladding

Priming: Sika-Primer 3N  
Adhesive: Sikaflex-11 FC

Sikafloor® floor coating systems\*

**KORTE®** concave moulding (H70/50)

Sikafloor®-156 + floating agent T  
or Sikadur®-31 CF



② Dry construction wall with  
adjustment screws

*Subject to change without prior notice*

### \* Sikafloor® floor coating systems

- Rigid and flexible epoxy or polyurethane coatings
- Sealings
- "Colorquarz" coverings
- Balcony coatings