

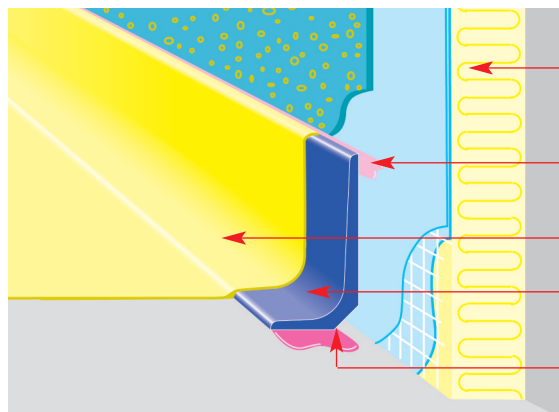
# KORTE® Concave mouldings & floor coating systems\*

 StoCretec

The ideal combination for perfect floor coating

## ■ KORTE® concave moulding Types H30/30 to H150/40

→ Example:  
For external thermal  
insulation composite system



External thermal insulation  
composite system

Priming: StoSeal P 305  
Adhesive: StoSeal F 355

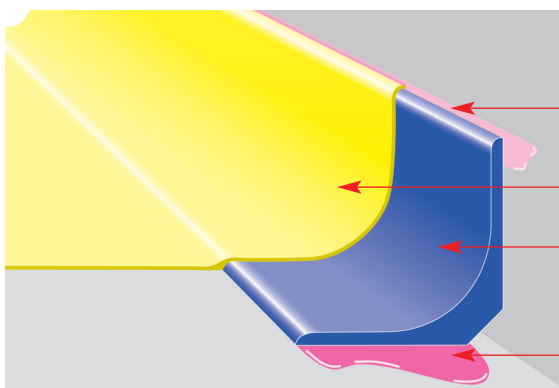
Cretec floor coating systems\*

**KORTE®** concave moulding (H50/25)

StoPox 452 EP +  
StoQuarz 0.2-0.7 mm (1 : 2.5)

## ■ KORTE® concave moulding Types H30/30 to H150/40

→ 'Fillets' for all standard  
applications



Priming: StoSeal P 305  
Adhesive: StoSeal F 355

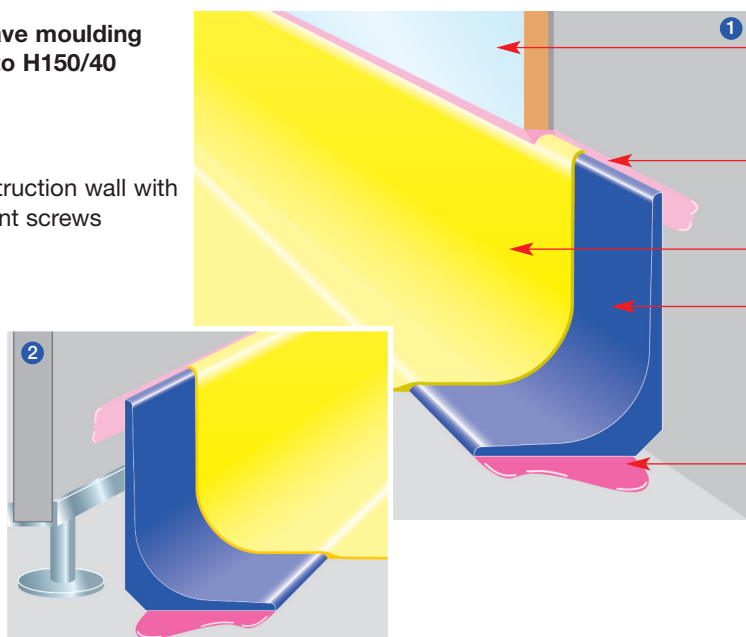
Cretec floor coating systems\*

**KORTE®** concave moulding (H50/50)

StoPox 452 EP +  
StoQuarz 0.2-0.7 mm (1 : 2.5)

## ■ KORTE® concave moulding Types H30/30 to H150/40

→ Example:  
① Tiled wall  
② Dry construction wall with  
adjustment screws



① Tiles or wall cladding

Priming: StoSeal P 305  
Pointing: StoSeal F 355

Cretec floor coating systems\*

**KORTE®** concave moulding (H70/50)

StoPox 452 EP +  
StoQuarz 0.2-0.7 mm (1 : 2.5)

*Subject to change without prior notice*

**Pretreatment: Clean pre-coating with StoDivers EV 100**

### \* Floor coating systems from StoCretec

- Thick film system
- Water-based paint system
- 'Colorquarz' system
- Thin film system
- Acrylate system
- One-day balcony coating